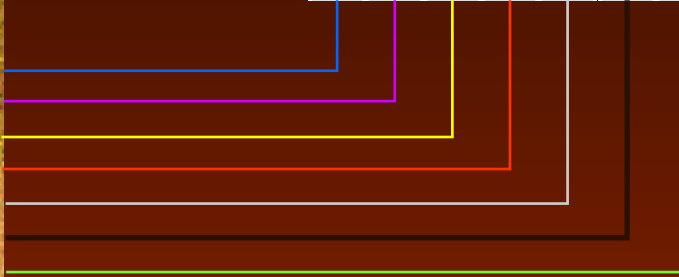




COMMANDER'S COMBAT PACK



Right Click on a Team or Unit



Left Click on a Team or Unit to Select



Left Click and drag to lasso a group



Press and hold the [Ctrl] Key and press one of the number keys (1 ~ 9)



This assigns the number to a Team or Group. Press the number in battle to instantly select that Team or Group.



Displays the area of Command influence. This is visible in both the Overview Screen (see example) and the Battle Screen.

Teams and Units which are within the area of influence of a Command Team or Unit will benefit from improved morale and fighting effectiveness.

Teams and Units who are outside the area of influence of a Command Team or Unit will be less effective and more likely to break or surrender if threatened or damaged.



COMMANDER'S COMBAT PACK

[F6]
Inset (mini) Map



[F7]
Soldier Monitor

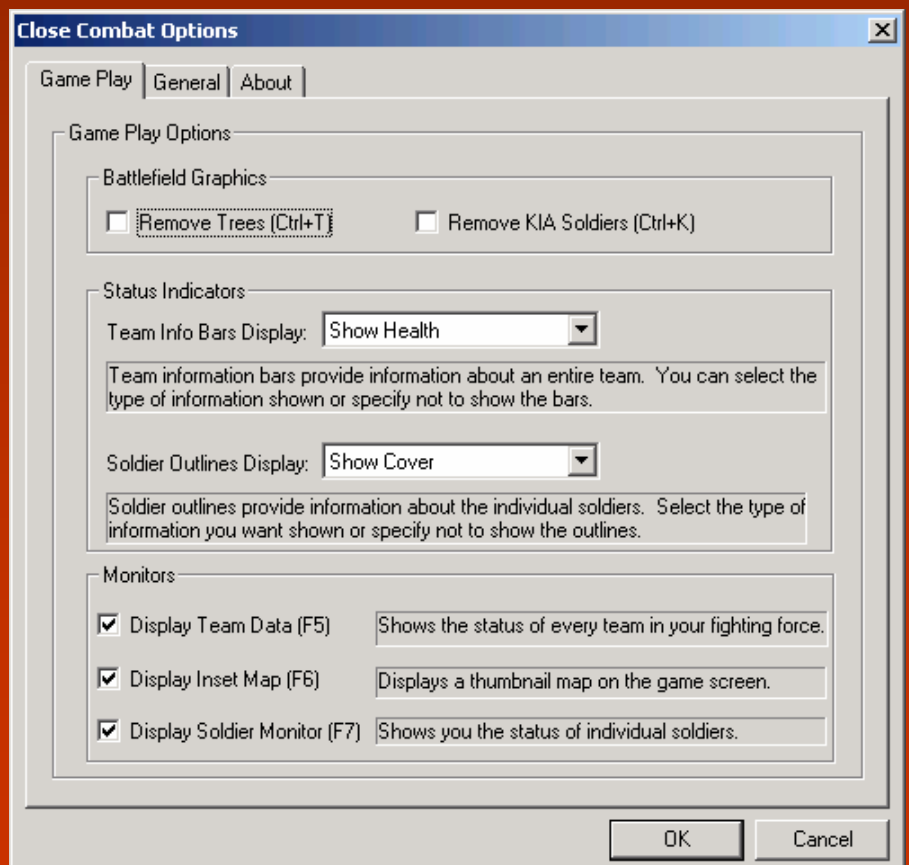


Träger	Assist. Ldr.	Healthy
Ambushing	AP	224 rds.
Blesch	Gunner	Healthy
Ambushing	AP	1250 rds.
Fischer	Loader	Healthy
Ambushing	AP	40 rds.

[F5]
Team Monitor



[F8]
Options



[F3]
Game Pause

COMMANDER'S COMBAT PACK



Refer to the Game Manual for more information about all the features available with Close Combat Cross of Iron

Close Combat Community

Visit the Close Combat Community Site and Forums for information, resources, support, and find other Close Combat players

Site <http://www.closecombat.org/CSO>

Forums <http://www.closecombat.org/forums>

Close Combat and Atomic are registered trademarks of Atomic Games, Inc.

